

Patient with Reference Denture

Overview

When a patient requires a replacement for their existing denture, creating a duplicate denture using the patient's current denture as a reference can be an efficient and effective solution. This workflow guides dental professionals through the process of fabricating a duplicate denture, ensuring that the new denture closely mimics (or improves upon) the fit, function, and esthetics of the patient's existing prosthesis.

PREREQUISITES

- ☐ If using CBCT scanner (see step 4), denture must not have a soft reline or any soft flanges.

TECHNOLOGY & MATERIALS

- ☐ CBCT or IOS scanner
- ☐ *Optional:* PVS impression material
- ☐ *Optional:* Blue or green mousse - for bites only

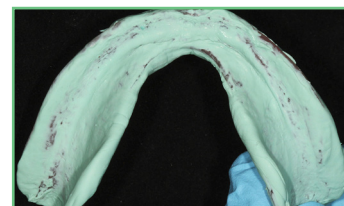
Patient with Reference Workflow

1. Take the following photos with the patient standing up:

- Full-face full-smile
- Full-face exaggerated smile
- *Optional:* Full-face profile

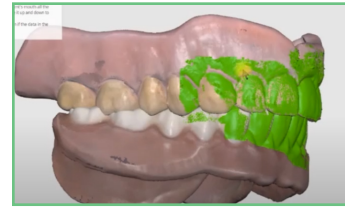


2. If needed, you may perform a hard reline/wash of the denture for a closer fit. Load the prosthesis with PVS impression material and seat, like a reline impression. Trim away any excess material around the flanges, facial, or buccal of the denture.



3. If you wish to restore teeth and VDO, you must capture the opposing and bite while the patient has the denture seated. You may either:

- Capture IOS scan of denture teeth, opposing, and bite, OR
- Capture physical impression and bite



Important: The denture must NOT have a soft relined or any soft flanges if using the CBCT scan method in step 4.

4. Use one of two methods to capture a 360° extraoral scan of the denture:

- **CBCT:** Capture a CBCT scan of the denture outside of the mouth. Make sure denture is sitting on foam or cotton rolls - NOT directly on the CBCT scan table, chin rest, or any hard, radiopaque surface.
- **IOS:** Perform 360° scan of the denture. Ensure there are no holes or stitching errors with your scan by checking scan when finished.



5. Upload your files and complete the Rx via www.roedentallab.com/upload. Follow the below protocol based on your scanning technology:

- **CBCT:** Export DICOM files (.DCM) from the CBCT into a zipped patient folder. Zip the patient folder and upload with the Rx and any other records (if applicable). Annotate any changes to be made (shade, wear, etc.) on the Rx.
- **IOS:** Submit your scans via the IOS portal, OR export your .STLs and upload to the ROE portal.



6. Seat the new denture.

