

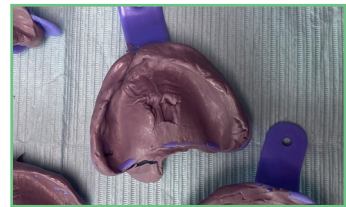
# Digital Denture Workflow 2

## Patient is Edentulous without Existing Dentures: 2-Appointment Process

**2-Appointment Process (Doctor creates bite block in office or uses a mush bite in place of the bite block)**

### 1. Capture Records

For a fully edentulous patient that do not have existing denture: take upper and lower standard PVS impressions capturing all landmarks and boarder extensions.



### 2. Modify Bite Block or Mush Bite

Use a flat impression tray to capture a mush bite of the patient's ridge against the opposing arch at the correct vertical dimension. With some techniques this can be done simultaneously with the impression process.

A photo of the patient with the adjusted bite block or mush bite seated and the patient smiling is highly recommended for denture accuracy. Including patient photos improves the accuracy of a setup by 25%!



### 3. Submit the Case to the Laboratory for the digital denture fabrication with instructions on the desired changes, including shade and acrylic color. The case can be submitted in two ways.

- a. Send all the records, including the patient's denture to the laboratory for scanning and fabrication.
- b. Capture 360° digital scan of a relined denture using an IOS scanner or a desktop scanner (see page 26 denture duplication scanning), often called a reference denture scan.



### 4. Seat Denture

The accuracy of digital design and 3D printing makes for an extremely predictable fit during the seating appointment.

