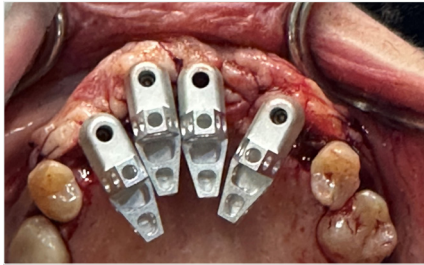


### 1. Pre-Surgical Scan

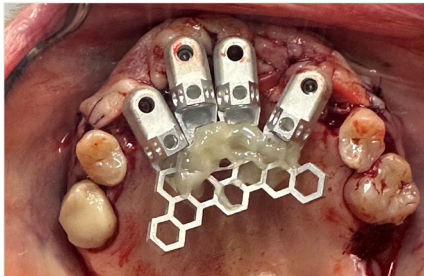
Scan 1

On the day of surgery, prior to beginning the surgical protocol, capture a pre-surgical IOS scan including the reference teeth.



### 2. Place OptiSplints on MUAs

After implant and MUA placement, but prior to suturing, place one OptiSplint scan body on each MUA, and rotate until the horizontal wings are touching or close to touching. Hand tighten each OptiSplint.



### 3. Lute Frame to OptiSplints

**Important: Ensure the frame is making at least partial contact with each OptiSplint scan body prior to luting.**

Lute the frame to the OptiSplint scan bodies using an ultra-low shrinkage material. Adjust with cutters to fit if necessary. Remove luted OptiSplint assembly once cured.



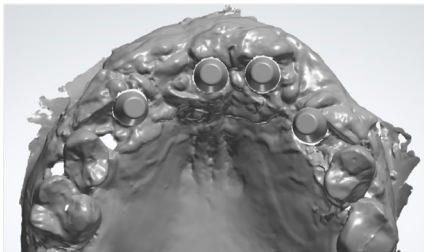
### 4. Extraoral Scan

Scan 2

Two options:

**Dr. Scans:** Scan with approved lab or IOS scanner. Submit .STL files to ROE via upload portal (step 6).

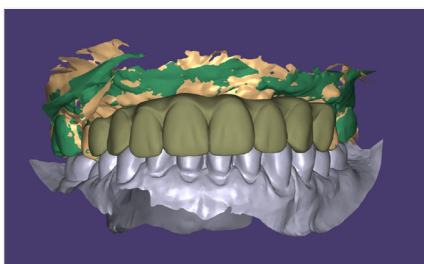
**ROE Scans:** Mail to ROE for a high resolution scan.



### 5. Post-Surgical Intraoral Scan

Scan 3

Capture an IOS scan of the tissue with healing collars seated and reference teeth (no OptiSplint).



### 6. Upload Files & Complete Rx

[www.roedentallab.com/upload](http://www.roedentallab.com/upload)

Submit your scans via the IOS portal, OR export your .STLs and upload to the ROE portal. Upload the completed Rx and [patient photographs](#) via the ROE portal.