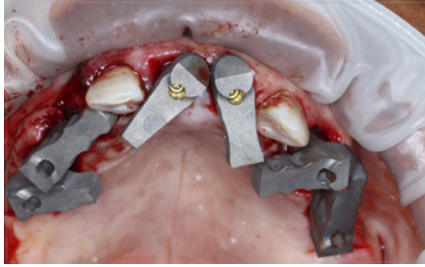




1. Pre-Surgical Scan

Scan 1

On the day of surgery, prior to the surgical protocol, capture a pre-surgical IOS scan including the reference teeth.



2. Place ArchBridge™ on MUAs

After implant and MUA placement, but prior to suturing, place one ArchBridge™ scan body on each MUA. Rotate until they are almost touching, for ease of scanability. Hand tighten each ArchBridge™.



3. ArchBridge™ Scan

Scan 2

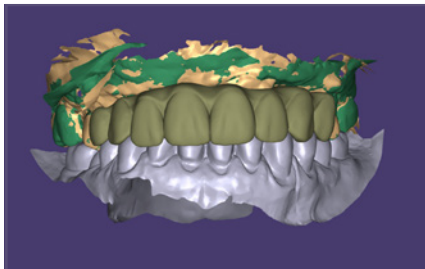
Capture an IOS scan of the ArchBridge™ scan bodies, including the teeth references, but excluding surrounding surfaces.



4. Tissue Scan

Scan 3

Capture an IOS scan of the tissue with reference teeth visible and healing collars seated (no ArchBridge™).



5. Upload Files & Complete Rx

Go to the ROE portal, www.roedentallab.com/upload, and upload patient photographs, completed Rx, and the following .STL files.

- Presurgical scan
- ArchBridge™ intraoral scan
- Post-surgical intraoral scan