

1. Pre-Surgical IOS Scan

Scan 1

On the day of surgery, prior to beginning the surgical protocol:

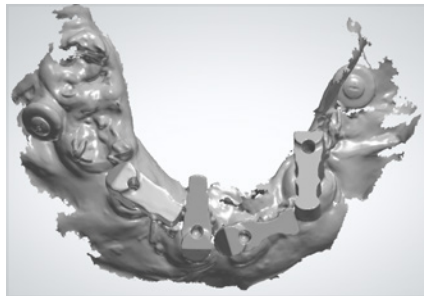
- Place at least two TADs on the palate or retromolar pads. Check the CBCT for the best location.
- Capture pre-surgical IOS scan.

Important: Ensure that the TADs are fully visible in the scan capture.



2. Place ArchBridge™ on MUAs

After implant and MUA placement, but prior to suturing, place one ArchBridge™ scan body on each MUA. Rotate until they are almost touching, for ease of scanability. Hand tighten each ArchBridge™.



3. ArchBridge™ Scan

Scan 2

Capture IOS scan, following the protocol of focusing on the scan bodies, not surrounding surfaces.

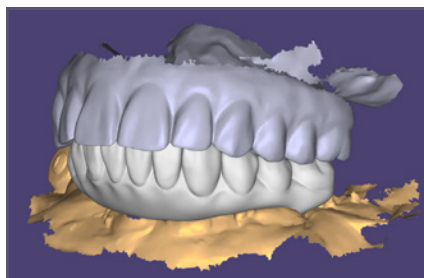


4. Post-Surgical Scans

Scan 3

Two options:

- IOS:** Capture an IOS scan of the tissue with healing collars seated, and TADs (no ArchBridge™). This can be pre- or post-suturing.
- PVS:** Capture a PVS impression of the tissue with healing collars seated (no ArchBridge™) and scan with IOS.



5. Upload Files & Complete Rx

Go to the ROE portal, www.roedentallab.com/upload, and upload patient photographs, completed Rx, and the following .STL files.

- Presurgical scan
- ArchBridge™ intraoral scan
- Post-surgical intraoral scan