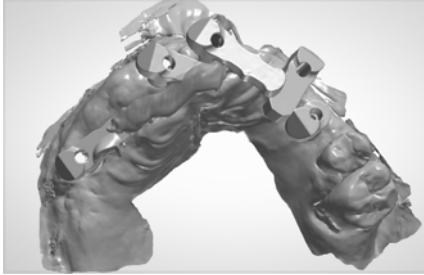




1. Place ArchBridge™ on MUAs

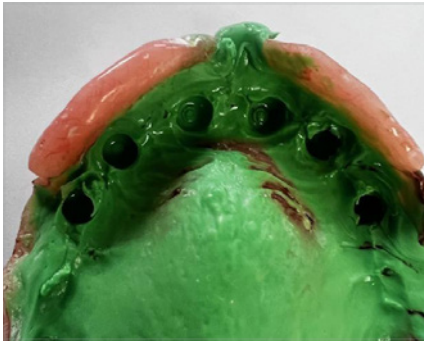
After implant and MUA placement, but prior to suturing, place one ArchBridge™ scan body on each MUA. Rotate until they are almost touching, for ease of scanability. Hand tighten each ArchBridge™.



2. ArchBridge™ Scan

Scan 1

Capture an IOS scan of the ArchBridge™ scan bodies, excluding surrounding surfaces.

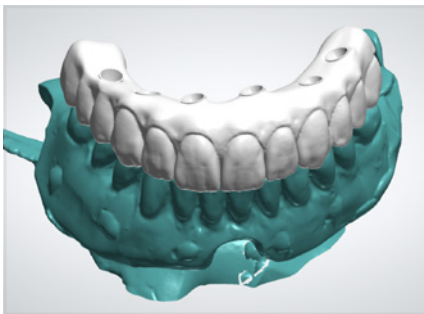


3. Denture Scan Protocol

Scan 2

Follow a denture scan protocol:

- Seat healing caps on each MUA and suture. Relieve denture to ensure passivity.
- Reline denture(s) with light body PVS. Place in the mouth and let set, in occlusion.
- Remove denture and take scan of the opposing.
- Take 360 IOS scan of the denture, capturing a clear image of the intaglio and healing cap impression.
- Re-seat denture and scan the bite.



4. Upload Files & Complete Rx

Go to the ROE portal, www.roedentallab.com/upload, and upload patient photographs, completed Rx, and the following .STL files.

- ArchBridge™ intraoral scan
- Denture extraoral scan
- Bite and opposing scan