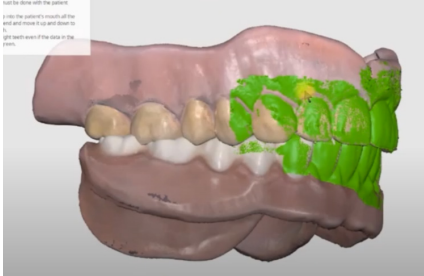


1. Perform a Wash/Hard Reline (if needed for fit)

Important: The denture must NOT have a soft reline or any soft flanges

If needed, you may perform a hard reline/wash of the denture for a closer fit. Load the prosthesis with Blue or Green Mousse and seat, like a reline impression. Trim away any excess material around the flanges, facial, or buccal of the denture.



2. Capture Opposing & Bite (Optional)

If you wish to restore wear on the teeth, you must capture additional records while the patient has the denture seated. You may either:

1. Capture IOS scan of denture teeth, opposing, and bite, OR
2. Capture physical impression and bite



3. Scan Denture

CBCT: Capture a CBCT scan of the denture outside of the mouth. **Make sure denture is sitting on foam or cotton rolls** - NOT directly on the CBCT scan table, chin rest, or any hard surface.

IOS: Perform 360° scan of the denture. Ensure there are no holes or stitching errors with your scan.



4. Upload Files & Complete Rx

www.roedentallab.com/upload

CBCT: Export DICOM files (.dcm) from the CBCT into a zipped patient folder. Zip the patient folder and upload with the Rx and any other records (if applicable). Annotate any changes to be made (shade, wear, etc.) on the Rx.

IOS: Submit your scans via the IOS porta, OR export your .STLs and upload to the ROE portal.



5. Seat Denture

Adjust the bite to comfort, or capture a new bite and return for a new denture (Reverse Reset).

If you need to reorder, simply give us a call. We store your records, so no patient appointments are required.



Learn more www.roedentallab.com/printdenture